

LIBRARY

NOTES:  
1. 1" THICK LETTERS: "LIBRARY"  
2. LETTERS TO BE INDIVIDUAL FABRICATED METAL PIECES WITH BRONZE FINISH.  
3. FOR SIGNAGE LOCATION AND MOUNTING HEIGHTS REFER TO 1/A6.02

MIDDLE SCHOOL OFFICE

NOTES:  
1. 1" THICK LETTERS: "MIDDLE SCHOOL OFFICE"  
2. LETTERS TO BE INDIVIDUAL FABRICATED METAL PIECES WITH BRONZE FINISH.  
3. FOR SIGNAGE LOCATION AND MOUNTING HEIGHTS REFER TO 1/A6.02

BUILDING SIGNAGE (MS PMINCHO FONT STYLE)

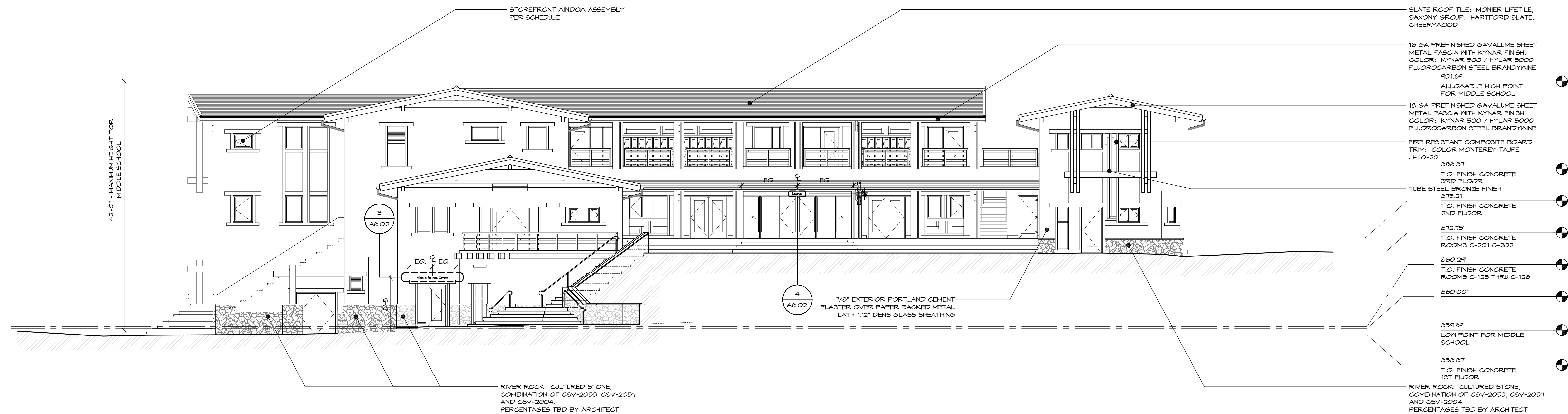
SCALE: 3"=1'-0"

4

BUILDING SIGNAGE (MS PMINCHO FONT STYLE)

SCALE: 3"=1'-0"

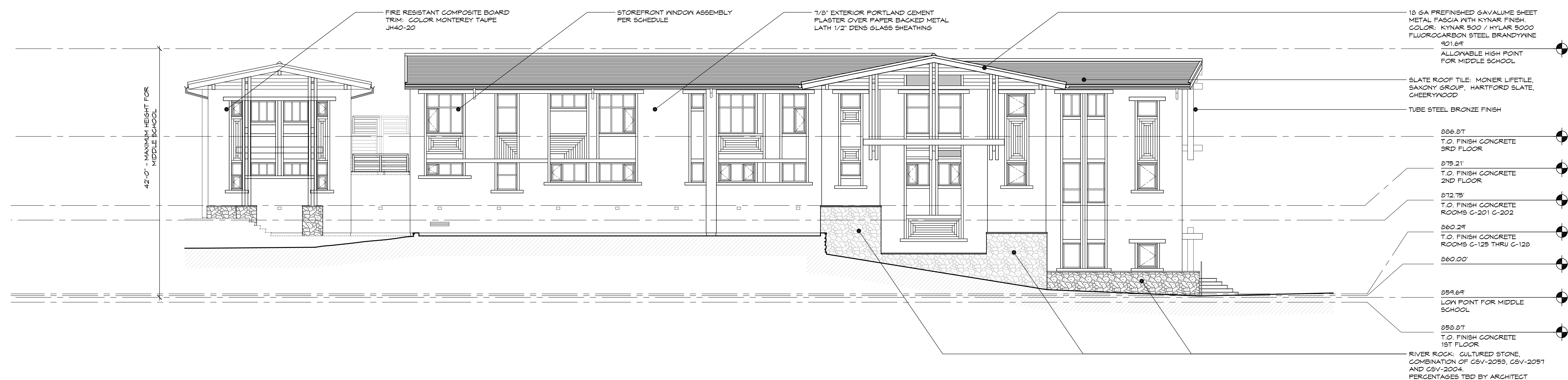
3



EAST ELEVATION - NEW CLASSROOM BUILDING

SCALE: 1/8"=1'-0"

2



WEST ELEVATION - NEW CLASSROOM BUILDING

SCALE: 1/8"=1'-0"

1

PROJECT

CHANDLER SCHOOL  
MIDDLE SCHOOL  
CLASSROOM  
BUILDING  
1005 ARMADA DRIVE  
PASADENA, CA 91103

PLAN CHECK SET

ISSUE

11-30-09 PLAN CHECK SUBMITTAL 17

REVISION

SHEET

EXTERIOR ELEVATIONS

SCALE: 1/8"=1'-0"

DRAWN BY:  
PLOT DATE: 12-07-09  
PROJECT NO: 05-161  
FILENAME: CA6002E1.1161

A6.02